

ORDINANCE NO. 2014- 3701

**AN ORDINANCE TO ACCEPT THE APPLICATION FOR ANNEXATION FOR THE PARCEL BEING PART OF LOTS 1 & 2 OF THE O.E. BALL SUBDIVISION IN SECTION 26, T-5-N, R-15-E, SANDUSKY TOWNSHIP, SANDUSKY COUNTY, STATE OF OHIO CONTAINING 6.4819 ACRES, MORE OR LESS, APPROVED FOR ANNEXATION BY THE BOARD OF SANDUSKY COUNTY COMMISSIONERS IN RESOLUTION 2014-37 AND TO ADOPT THE RECOMMENDATION OF THE ASSISTANT ENGINEER FOR THE INTERIM ZONING OF THE AREA TO BE I-2 GENERAL INDUSTRIAL DISTRICT.**

**WHEREAS**, a petition for the annexation of certain territory in Sandusky County was duly filed by Kay E. Reiter, Agent for Petitioners, and

**WHEREAS**, the petition was duly considered by the Board of County Commissioners; and

**WHEREAS**, the Board of County Commissioners approved the annexation of the territory to the City of Fremont as hereinafter described on January 28, 2014 by Resolution 2014-37; and

**WHEREAS**, the Board of County Commissioners certifies that the transcript of the proceedings in connection with the annexation and the map and the Petition required in connection therewith was transmitted to the City Clerk who received the same on January 31, 2014; and

**WHEREAS**, sixty (60) days from the date of the filing have now elapsed in accordance with the provisions of the Ohio Revised Code Section 709.04;

**WHEREAS**, the Fremont City Assistant Engineer recommended the interim zoning for the area to be zoned as I-2 General Industrial District.

**NOW, THEREFORE, BE IT ORDAINED BY THE COUNCIL OF THE CITY OF FREMONT, STATE OF OHIO:**

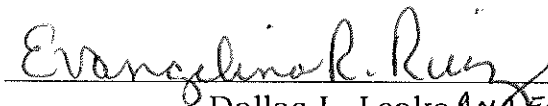
**SECTION 1.** That the proposed annexation as applied for in the Petition of Crown Battery, filed with the Board of County Commissioners of Sandusky County, in which the Petition prayed for the annexation to the City of Fremont, Ohio of certain territory adjacent thereto as hereinafter described, in which the Petition was approved for annexation to the City of Fremont by the Board of County Commissioners by Resolution 2014-37 on January 28, 2014, be and the same is hereby accepted. A copy of the Sandusky County Commissioner's Resolution 2014-37 and legal description of the territory to be annexed is attached as Exhibit A.

**SECTION 2.** The Clerk of City Council be and she is hereby authorized and directed to make three (3) copies of this Ordinance to each of which shall be attached a copy of the map accompanying the Petition for annexation, a copy of the transcript of proceedings of the Board of County Commissioners relating thereto and a certificate as to the correctness thereof. The Clerk shall then forthwith deliver one copy to the County Auditor, one copy to the County Recorder, and one copy to the Secretary of State and shall file notice of this annexation with the Board of Elections within thirty (30) days after it becomes effective, and the Clerk shall do all other things required by law.

**SECTION 3.** The interim zoning classification of the annexed territory shall be zoned I-2 General Industrial District.

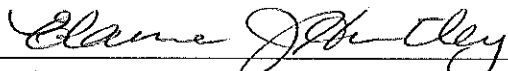
**SECTION 4.** It is hereby found and determined that all formal actions of this Council concerning and relating to the passage of this Ordinance were adopted in an open meeting of this Council, and that all deliberations of this Council and any of its committees that resulted in such formal action, were in meetings open to the public, in compliance with all legal requirements, including Section 121.22 of the Revised Code of Ohio.


**SECTION 5.** This Ordinance shall take effect and be in force from and after the earliest period allowed by law.

  
Dallas L. Leake ANGELENA RUIZ  
President of Council PRO TEM

PASSED: 5-1-14  
Effective date: 5-1-14

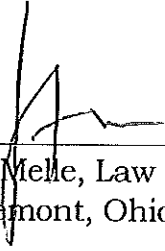
YEAS: 6 NAYS: 0

  
Elaine J. Huntley, City Council Clerk

  
James H. Ellis III, Mayor

ORD1851

Approved as to form by:

A handwritten signature in black ink, appearing to read 'J. Melle', is written over a horizontal line.

James F. Melle, Law Director  
City of Fremont, Ohio

## RESOLUTION 2014 - 37

## RESOLUTION ---- GRANTING ANNEXATION PETITION 2014 - 01 FOR ANNEXATION TO THE CITY OF FREMONT BY PETITIONER CROWN BATTERY

The Board of County Commissioners, Sandusky County, Ohio, met in regular session on the 28<sup>th</sup> day of January, 2104 at the offices of the Board with the following members present:

Dan Polter

Matt Damschroder

Terry Thatcher

Commissioner Damschroder moved the adoption of the following resolution:

Whereas, a petition for annexation filed on 01.23.2014 under an Expedited Type 1 filing has been presented by Crown Battery, and,

Whereas, the petition meets all the technical requirements of the statutes as addressed in ORC 709.02, 709.021 & 709.022, et seq.,

THEREFORE; Be It Resolved,

Section 1. The petition for annexation 2014-01 is hereby granted.

Section 2. Certified copies of this resolution are directed to the Clerk of Council or the Auditor<sup>E</sup> for the City of Fremont and to the Agent for the Petitioner, Kay<sup>E</sup> Reiter at the Sandusky County Economic Development Corporation ([director@sanduskycountyedc.com](mailto:director@sanduskycountyedc.com)).

Section 3. It is found and determined that all formal actions of this Board concerning and relating to the adoption of this resolution were so adopted in an open meeting of this Board, and that all formal actions, were in meetings open to the public, in compliance with all legal requirements.

Commissioner Polter offered a second to the motion for the above resolution and the vote upon its adoption resulted as follows:

*J. H. Baird*

*Yes*

*John P. H.*

*Yes*

*Mark ...*

*Yes*

Considered and adopted by unanimous vote.

Attest: *Wanda Beem*  
Clerk to the Board

file: annexations  
copies:

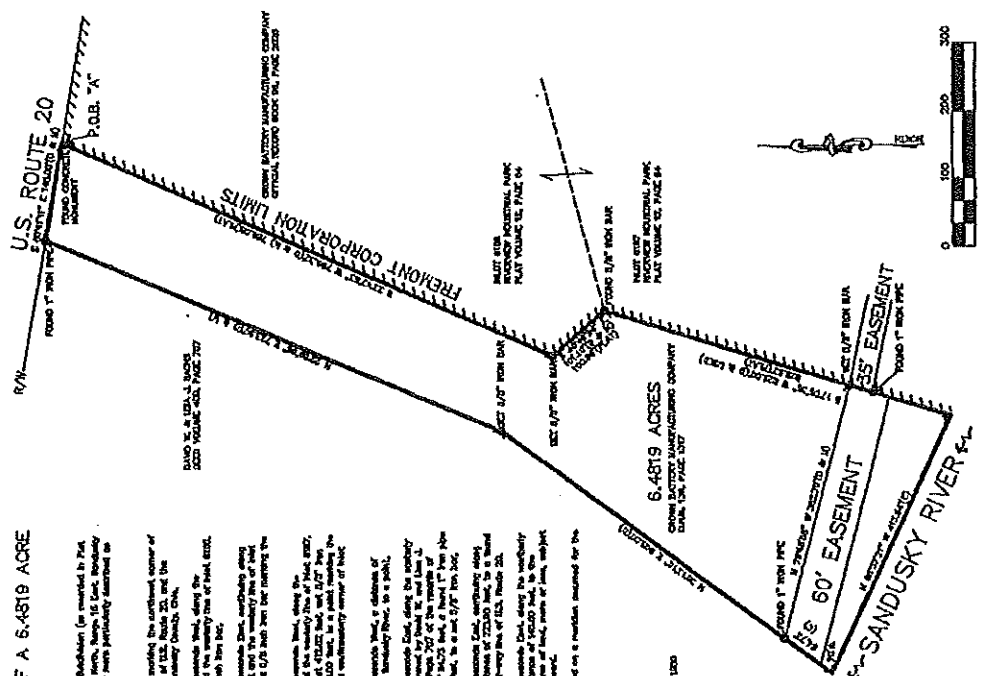
I, the undersigned, Clerk of the Board of Commissioners, Sandusky County, Ohio, do hereby certify that the foregoing is a true and correct copy from the official record of the Board of County Commissioners as recorded in the official Journal.

\_\_\_\_\_  
Clerk, Board of County Commissioners  
Sandusky County, Ohio

**FILED**  
2014 JAN 27 PM 1:31  
SANDUSKY COUNTY  
COMMISSIONERS  
CLERK

**LEGAL DESCRIPTION OF A 6.4819 ACRE PARCEL**

Being part of Lots 1 & 2 of the 0.52 acre subdivision (as recorded in Plat Book 6236, the southern right-of-way line of 133, 134, 135, 136, 137, 138, 139, 140, 141, 142, 143, 144, 145, 146, 147, 148, 149, 150, 151, 152, 153, 154, 155, 156, 157, 158, 159, 160, 161, 162, 163, 164, 165, 166, 167, 168, 169, 170, 171, 172, 173, 174, 175, 176, 177, 178, 179, 180, 181, 182, 183, 184, 185, 186, 187, 188, 189, 190, 191, 192, 193, 194, 195, 196, 197, 198, 199, 200, 201, 202, 203, 204, 205, 206, 207, 208, 209, 210, 211, 212, 213, 214, 215, 216, 217, 218, 219, 220, 221, 222, 223, 224, 225, 226, 227, 228, 229, 230, 231, 232, 233, 234, 235, 236, 237, 238, 239, 240, 241, 242, 243, 244, 245, 246, 247, 248, 249, 250, 251, 252, 253, 254, 255, 256, 257, 258, 259, 260, 261, 262, 263, 264, 265, 266, 267, 268, 269, 270, 271, 272, 273, 274, 275, 276, 277, 278, 279, 280, 281, 282, 283, 284, 285, 286, 287, 288, 289, 290, 291, 292, 293, 294, 295, 296, 297, 298, 299, 300, 301, 302, 303, 304, 305, 306, 307, 308, 309, 310, 311, 312, 313, 314, 315, 316, 317, 318, 319, 320, 321, 322, 323, 324, 325, 326, 327, 328, 329, 330, 331, 332, 333, 334, 335, 336, 337, 338, 339, 340, 341, 342, 343, 344, 345, 346, 347, 348, 349, 350, 351, 352, 353, 354, 355, 356, 357, 358, 359, 360, 361, 362, 363, 364, 365, 366, 367, 368, 369, 370, 371, 372, 373, 374, 375, 376, 377, 378, 379, 380, 381, 382, 383, 384, 385, 386, 387, 388, 389, 390, 391, 392, 393, 394, 395, 396, 397, 398, 399, 400, 401, 402, 403, 404, 405, 406, 407, 408, 409, 410, 411, 412, 413, 414, 415, 416, 417, 418, 419, 420, 421, 422, 423, 424, 425, 426, 427, 428, 429, 430, 431, 432, 433, 434, 435, 436, 437, 438, 439, 440, 441, 442, 443, 444, 445, 446, 447, 448, 449, 450, 451, 452, 453, 454, 455, 456, 457, 458, 459, 460, 461, 462, 463, 464, 465, 466, 467, 468, 469, 470, 471, 472, 473, 474, 475, 476, 477, 478, 479, 480, 481, 482, 483, 484, 485, 486, 487, 488, 489, 490, 491, 492, 493, 494, 495, 496, 497, 498, 499, 500, 501, 502, 503, 504, 505, 506, 507, 508, 509, 510, 511, 512, 513, 514, 515, 516, 517, 518, 519, 520, 521, 522, 523, 524, 525, 526, 527, 528, 529, 530, 531, 532, 533, 534, 535, 536, 537, 538, 539, 540, 541, 542, 543, 544, 545, 546, 547, 548, 549, 550, 551, 552, 553, 554, 555, 556, 557, 558, 559, 560, 561, 562, 563, 564, 565, 566, 567, 568, 569, 570, 571, 572, 573, 574, 575, 576, 577, 578, 579, 580, 581, 582, 583, 584, 585, 586, 587, 588, 589, 590, 591, 592, 593, 594, 595, 596, 597, 598, 599, 600, 601, 602, 603, 604, 605, 606, 607, 608, 609, 610, 611, 612, 613, 614, 615, 616, 617, 618, 619, 620, 621, 622, 623, 624, 625, 626, 627, 628, 629, 630, 631, 632, 633, 634, 635, 636, 637, 638, 639, 640, 641, 642, 643, 644, 645, 646, 647, 648, 649, 650, 651, 652, 653, 654, 655, 656, 657, 658, 659, 660, 661, 662, 663, 664, 665, 666, 667, 668, 669, 670, 671, 672, 673, 674, 675, 676, 677, 678, 679, 680, 681, 682, 683, 684, 685, 686, 687, 688, 689, 690, 691, 692, 693, 694, 695, 696, 697, 698, 699, 700, 701, 702, 703, 704, 705, 706, 707, 708, 709, 710, 711, 712, 713, 714, 715, 716, 717, 718, 719, 720, 721, 722, 723, 724, 725, 726, 727, 728, 729, 730, 731, 732, 733, 734, 735, 736, 737, 738, 739, 740, 741, 742, 743, 744, 745, 746, 747, 748, 749, 750, 751, 752, 753, 754, 755, 756, 757, 758, 759, 760, 761, 762, 763, 764, 765, 766, 767, 768, 769, 770, 771, 772, 773, 774, 775, 776, 777, 778, 779, 780, 781, 782, 783, 784, 785, 786, 787, 788, 789, 790, 791, 792, 793, 794, 795, 796, 797, 798, 799, 800, 801, 802, 803, 804, 805, 806, 807, 808, 809, 810, 811, 812, 813, 814, 815, 816, 817, 818, 819, 820, 821, 822, 823, 824, 825, 826, 827, 828, 829, 830, 831, 832, 833, 834, 835, 836, 837, 838, 839, 840, 841, 842, 843, 844, 845, 846, 847, 848, 849, 850, 851, 852, 853, 854, 855, 856, 857, 858, 859, 860, 861, 862, 863, 864, 865, 866, 867, 868, 869, 870, 871, 872, 873, 874, 875, 876, 877, 878, 879, 880, 881, 882, 883, 884, 885, 886, 887, 888, 889, 890, 891, 892, 893, 894, 895, 896, 897, 898, 899, 900, 901, 902, 903, 904, 905, 906, 907, 908, 909, 910, 911, 912, 913, 914, 915, 916, 917, 918, 919, 920, 921, 922, 923, 924, 925, 926, 927, 928, 929, 930, 931, 932, 933, 934, 935, 936, 937, 938, 939, 940, 941, 942, 943, 944, 945, 946, 947, 948, 949, 950, 951, 952, 953, 954, 955, 956, 957, 958, 959, 960, 961, 962, 963, 964, 965, 966, 967, 968, 969, 970, 971, 972, 973, 974, 975, 976, 977, 978, 979, 980, 981, 982, 983, 984, 985, 986, 987, 988, 989, 990, 991, 992, 993, 994, 995, 996, 997, 998, 999, 1000.



**REVISIONS**  
Date: 10/26/2014  
By: [Name]  
Project: [Name]  
Drawing: [Name]

REVISED 01.27.2014

I hereby certify this plat to be a true representation of a survey made in accordance with the laws of the State of Ohio.

<b>CROWN BATTERY</b> MANUFACTURED PLAT PREPARED FOR	<b>YEAGER SURVEYING CO.</b> R.E. YEAGER SURVEYING CO. 517 S. GARDNER ST. #100 SANDUSKY, OHIO 44870 TEL: 419-485-1111	<b>SANDUSKY COUNTY RECORDERS</b> SANDUSKY COUNTY RECORDERS 100 WEST WASHINGTON ST., SANDUSKY, OHIO 44870 TEL: 419-485-1111	<b>SANDUSKY COUNTY ENGINEERS</b> SANDUSKY COUNTY ENGINEERS 100 WEST WASHINGTON ST., SANDUSKY, OHIO 44870 TEL: 419-485-1111	<b>SANDUSKY COUNTY SURVEYORS</b> SANDUSKY COUNTY SURVEYORS 100 WEST WASHINGTON ST., SANDUSKY, OHIO 44870 TEL: 419-485-1111
--------------------------------------------------------	----------------------------------------------------------------------------------------------------------------------------------------	-------------------------------------------------------------------------------------------------------------------------------------	-------------------------------------------------------------------------------------------------------------------------------------	-------------------------------------------------------------------------------------------------------------------------------------

**DEPARTMENT OF PUBLIC SAFETY**  
SANDUSKY COUNTY ENGINEERS  
SANDUSKY COUNTY SURVEYORS  
SANDUSKY COUNTY RECORDERS

**APPROVED FOR RECORDING BY:** [Name], [Title], [Date]

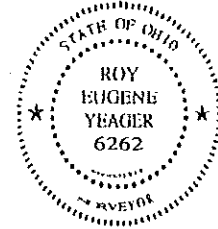
**APPROVED FOR RECORDING BY:** [Name], [Title], [Date]



## ROY E. YEAGER SURVEYING CO.

Professional Land Surveyor #6262

401 North Ohio Avenue Suite E,  
Fremont, Ohio 43420  
Phone - (419) 334-8348  
Fax - (419)-332-0768



Legal Description for Crown Battewry Manufacturing Company  
6.4819 Acre Parcel

Being part of Lots 1 & 2 of the O.E. Ball Subdivision (as recorded in Plat Volume 2 Page 54) in Section 26, T-5-N, R-15-E, Sandusky Township, Sandusky County, Ohio and being more particularly described as follows,

BEGINNING at a found concrete monument marking northwest corner of Inlot 6186, the southerly right-of-way line of U.S. Route 20, and the Corporation line of the City of Fremont, Sandusky County, Ohio,

thence, South 23 degrees 47 minutes 53 seconds West, along the Corporation line of the City Fremont and the westerly line of Inlot 6186, a distance of 786.32 feet, to a set 5/8" iron bar,

thence, South 40 degrees 46 minutes 24 seconds East, continuing along the Corporation line of the City of Fremont and the westerly line of Inlot 6186, a distance of 101.10 feet, to a found 5/8" iron bar marking the northwest corner of Inlot 6187,

thence, South 17 degrees 05 minutes 36 seconds West, along the Corporation line of the City of Fremont and the westerly line of Inlot 6187, passing at a distance of 377.78 feet and at 412.82 feet, set 5/8" iron bars for reference, a total distance of 529.00 feet, to a point marking the water's edge of the Sandusky River and the southwesterly corner of Inlot 6187,

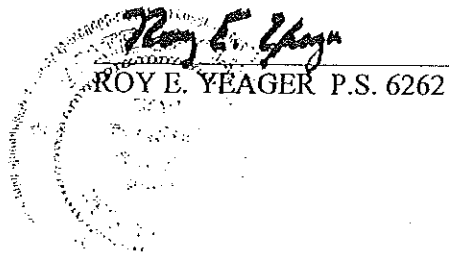
thence, North 65 degrees 37 minutes 21 seconds West, a distance of 413.54 feet, along the water's edge of the Sandusky River, to a point,

thence, North 36 degrees 13 minutes 15 seconds East, along the easterly line of a parcel of land, now or formerly owned by David W. and Lisa J. Sachs, as described in Deed Volume 409, Page 707 of the records of Sandusky County, passing at a distance of 84.73 feet, a found 1" iron pipe for reference, a total distance of 605.00 feet, to a set 5/8" iron bar,

thence, North 22 degrees 59 minutes 58 seconds East, continuing along the easterly line of said Sach lands, a distance of 723.90 feet, to a found 1" iron pipe marking the southerly right-of-way line of U.S. Route 20,

thence, South 80 degrees 41 minutes 11 seconds East, along the southerly right-of-way line of U.S. Route 20, a distance of 145.00 feet, to the POINT OF BEGINNING, containing 6.4819 acres of land, more or less, subject to all legal highways and restrictions of record.

Bearings in the above description are based on a meridian assumed for the purpose of indicating angles only.



JANUARY 2014  
DATE