



CSO

PUBLIC NOTIFICATION PLAN

Requirement: The City of Fremont shall develop a public notification plan that describes how it will ensure that the public receives adequate notification of Combined Sewer Overflow (CSO) occurrences and impacts. The City will post the plan on its website and will provide notification of how to view the plan in bill mailings at least annually.

1. Identification of sign locations:

The City of Fremont has 14 permitted CSO locations. All of which have signs indicating the possibility that a CSO could occur at that location. Four of the locations (5, 9, 12, 13 as indicated in Table 1 and Figure 1) are pumped CSOs and have beacons that turn on when a CSO is occurring at that location and have signage indicating as such.

Location on Map (Figure 1)	Station Code (Latitude, Longitude)	Description
1	2PD00007004 (41N 20' 35" 83W 06' 31")	<u>Oxbow Pond (Middle)</u> – Gravity outfall to Sandusky River. Manually operated sluice gate. Flap gate on river side.
2	2PD00007005 (41N 20' 40" 83W 06' 35")	<u>Oxbow Pond (North)</u> – Gravity outfall to Sandusky River. Manually operated sluice gate. Flap gate on river side.
3	2PD00007006 (41N 20' 52" 83W 06' 42")	<u>Howland Street</u> - Gravity outfall to Sandusky River. Manually operated sluice gate. Flap gate on river side.
4	2PD00007007 (41N 21' 02" 83W 06' 33")	<u>Pine Street (gravity)</u> - Gravity outfall to Sandusky River. Manually operated sluice gate. Flap gate on river side.
5	2PD00007008 (41N 21' 03" 83W 06' 02")	<u>Pine Street (pumped)</u> – Pumped overflow to Sandusky River. Mercury switch float level control activated. Three 12,000 gpm Johnston vertical turbine pumps.
6	2PD00007009 (41N 21' 06" 83W 06' 23")	<u>Chestnut Street</u> – This CSO is no longer active and has been bricked shut. Previously gravity to Sandusky River.
7	2PD00007010 (41N 21' 21" 83W 06' 58")	<u>Walnut Street Siphon</u> - This CSO is no longer active and has been bricked shut. Previously gravity to Sandusky River.
8	2PD00007011 (41N 20' 29" 83W 06' 36")	<u>Birchard Street (gravity)</u> - Gravity outfall to Sandusky River. Two manually operated sluice gates. Flap gates on river side.
9	2PD00007012 (41N 20' 28" 83W 06' 37")	<u>Birchard Street (pumped)</u> – Pumped overflow to Sandusky River. Drexelbrook level control activated. Two 6000 gpm Johnston vertical turbine pumps.
10	2PD00007013 (41N 21' 04" 83W 06' 45")	<u>Bull Run</u> - Gravity outfall to Sandusky River. Two manually operated sluice gates. Flap gates on river side.
11	2PD00007015 (41N 21' 14" 83W 06' 37")	<u>Liberty Street (gravity)</u> - Gravity outfall to Sandusky River. Two manually operated sluice gates. Flap gates on river side.
12	2PD00007016 (41N 21' 13" 83W 06' 38")	<u>Liberty Street (pumped)</u> - Pumped overflow to Sandusky River. Drexelbrook level control activated. Three 6000 gpm Johnston vertical turbine pumps.
13	2PD00007017 (41N 21' 31" 83W 06' 17")	<u>Sand Road Pond</u> - Gravity outfall to Sandusky River. Manually operated sluice gate. Flap gate on river side.
14	2PD00007018 (41N 21' 07" 83W 06' 45")	<u>Fulton Street</u> - Gravity outfall to Sandusky River. Manually operated sluice gate.

Table 1

* All CSOs discharge to the Sandusky River

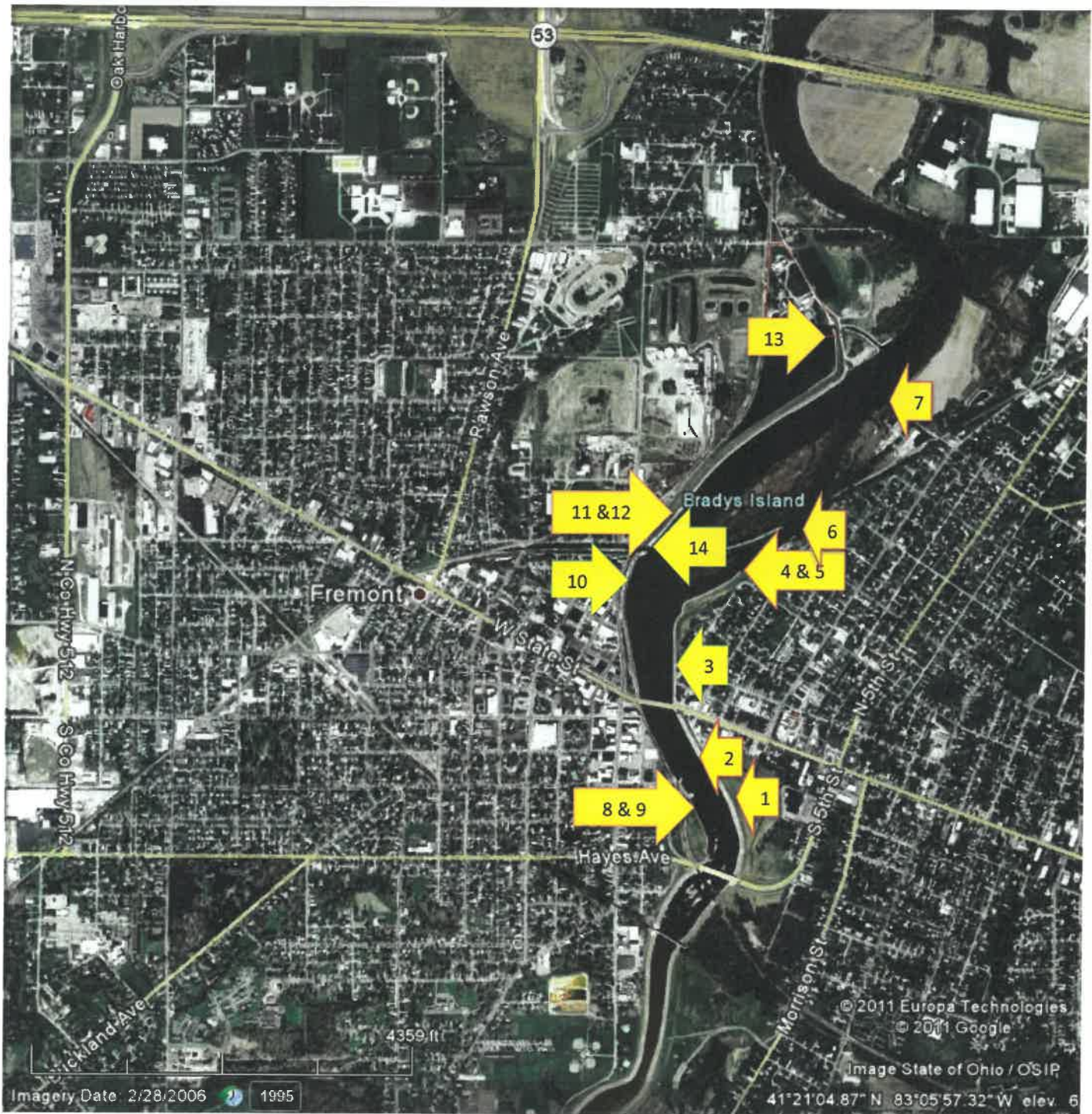


Figure 1 – CSO locations

*The City believes a sign should be located at the Darr-Root Fishing Access area and will work with the Ohio Department of Natural Resources to determine where the sign should be located to be most effective.

2. Description of message used on signs:

All signs have the required information including the name of permittee and phone number, description of the discharge, NPDES permit number and station code.

Examples of signage are indicated in the following pictures.



Pumped CSO Location



Non-pumped CSO location

3. Describe protocol for maintaining signage:

All signs will be inspected annually at a minimum, although most will be inspected weekly as the main pump stations are inspected Monday through Friday (except holidays). All signs will be replaced as needed and updated with any changes to the required information.

4. Identify (with points of Contact) the municipalities, public drinking water supplies, public parks with water access, Indian Tribe(s), and describe other sensitive area(s) identified in the permittee's long term CSO control plan, that may be impacted by the permittee's CSO discharges.

The City of Fremont is located in the downstream reaches of the Sandusky River watershed near its outlet into Sandusky Bay which flows into Lake Erie. Watershed drainage area totals approximately 1,421 square miles, of which the majority is upstream of the City of Fremont.

Water quality standards including water use designations have been established by the State of Ohio for the segment of the Sandusky River running through the City of Fremont.

The aquatic life use designation is a Warmwater Habitat (WWH), recreational use designation is Primary Contact Recreation (PCR) water, and the water supply designation is Agricultural Water Supply (AWS) and Industrial Water Supply (IWS). The river has a Public Water Supply (PWS) designation upstream of the City. The City's CSO and WRC discharges are all located downstream of the PWS designation area.

The following entities were contacted regarding CSO Notification:

- 1) Sandusky County Board of Health, Sandusky County, Ohio, 2000 Countryside Drive, Fremont, Ohio 43420, Martha Bowen, B.S., R.S., Director of Environmental Health, 419-334-6377. mbowen@sanduskycohd.org
- 2) Darr-Root Fishing Access Area, Ohio Department of Natural Resources, 201 Walnut Street, Fremont, Ohio 43420, Mike Wilkerson, 419-424-5000, mike.wilkerson@dnr.state.oh.us
- 3) Pickerel Creek Wildlife Area, Ohio Department of Natural Resources, 3451 County Road 256, Vickery, Ohio 43464, James Schott, Area Manager, 419-547-6007. James.Schott@dnr.state.oh.us

5. Summarize significant comments and recommendations raised by the local health department.

A copy of the CSO Public Notification Plan was emailed to Martha Bowen, B.S., R.S. the Director of Environmental Health for the Sandusky County Board of Health. She was also contacted by phone and at this time has no comments or recommendations. She did request to receive email notification of CSO events to her work email.

6. Identify other public entities and Indian Tribes whose waters may be impacted by a CSO discharge that were contacted.

Darr-Root Fishing Access Area is a State owned public access area that is managed by the Ohio Department of Natural Resources. It is located at 201 Walnut Street which is directly across the Sandusky River from the Fremont WRC and downstream of all of the City's CSO discharges. They were contacted and requested that they be included on the notification list and will receive email notifications of any CSO events.

Pickerel Creek Wildlife Area was contacted and chose not to be on the notification list at this time. They were informed that CSO information was available on the City's website. If they choose in the future to be added to the notification list the CSO Notification Plan will be updated at that time.

7. Describe protocols for the initial and supplemental notice to public health departments and other public entities.

The Liberty Street CSO that is pumped (Station Code 2PD00007016) has a monitoring and call out system that alerts facility personnel when a CSO occurs. Historically this is the first CSO to activate and if another CSO activates this one does also. When personnel are notified by the system that a CSO is occurring the appropriate public entities and other interested parties that are on the notification list will be contacted by email within four hours. Either the Operator on duty or the Fremont WRC Superintendent or Assistant

Superintendent will issue the initial notification. Supplemental notifications will be issued by the Fremont WRC Superintendent.

*The City is currently investigating installing the same or similar monitoring systems that call out in the remaining two pumped CSO locations (Birchard 2PD00007012 and Pine 2PD00007008) and the passive Fulton Street CSO location (2PD00007018). These installations should be completed by the end of June 2019. All other CSO locations require manual opening of gates and therefore City personnel are aware when those locations discharge.

The initial notification email will have the following information:

1. The water body that received the discharge: Sandusky River
2. The location(s) of the discharge(s): Downtown Fremont to discharge channel of Fremont WRC. The only public access area that would be potentially impacted is the Darr-Root Fishing Access Area.
3. The Date and Time the CSO commenced or when Fremont WRC personnel became aware of the CSO event.
4. Indicate whether at the time of the notification if the discharge is still occurring and if not the approximate time it ended.
5. Point of contact: jlamson@fremontohio.org Phone 419-334-3876 or 419-680-5217

The supplemental notification will be provided to the public and other interested parties within seven days of an event and will have the following information:

1. The measured or estimated volume of the discharge.
 2. The approximate time that the CSO discharge ended.
- 8. Describe protocols for the initial and supplemental notice to the public.**
The City of Fremont will maintain a list of email contacts that wish to be notified of CSO discharges. These contacts will receive both initial and supplemental notifications. There will be instructions on the City's website on how interested parties can be added to the notification list. There will be information included on a utility bill instructing the public where to go on the City's website for more information and how to sign up for notifications. The information contained in these notifications will be the same as contained in section 7 of this document.

*In addition to the email notification, the City is working with the County's Emergency Management Agency to develop a call out system that citizens can sign up for that will notify them of a CSO event and that will contain any important health and/or environmental information about the CSO discharge.

9. Describe, for each CSO location, how the volume and duration of the CSO discharges shall be either measured or estimated. If the Great Lakes Basin CSO Permittee intends to use a model to estimate discharge volumes and durations, the plan must summarize the model and describe how the model was or will be calibrated.

The City has hour meters installed on three pumped CSO locations. The pumps have been calibrated and volume and duration can be determined based off pump run times. The one passive CSO location may have a meter installed and that will then be used for duration and volume information. All other CSO locations are initiated by manually opening a gate and therefore duration will be known by the opening and closing times of the gates. Volume at these locations will be determined by utilizing a model that is currently being developed by the City's consultant, Stantec. Details of the model will be incorporated into this document when Stantec is finished.

Location on Map (Figure 1)	Station Code (Latitude, Longitude)	Explanation on how duration and volume will be determined
1	2PD00007004 (41N 20' 35" 83W 06' 31")	<u>Oxbow Pond (Middle)</u> – Gravity outfall to Sandusky River. Manually operated sluice gate. Duration by open and close times. Volume by use of model.
2	2PD00007005 (41N 20' 40" 83W 06' 35")	<u>Oxbow Pond (North)</u> – Gravity outfall to Sandusky River. Manually operated sluice gate. Duration by open and close times. Volume by use of model.
3	2PD00007006 (41N 20' 52" 83W 06' 42")	<u>Howland Street</u> - Gravity outfall to Sandusky River. Manually operated sluice gate. Duration by open and close times. Volume by use of model.
4	2PD00007007 (41N 21' 02" 83W 06' 33")	<u>Pine Street (gravity)</u> - Gravity outfall to Sandusky River. Manually operated sluice gate. Duration by open and close times. Volume by use of model.
5	2PD00007008 (41N 21' 03" 83W 06' 02")	<u>Pine Street (pumped)</u> – Pumped overflow to Sandusky River. Mercury switch float level control activated. Three 12,000 gpm Johnston vertical turbine pumps.
6	2PD00007009 (41N 21' 06" 83W 06' 23")	<u>Chestnut Street</u> – This CSO is no longer active and has been bricked shut. Previously gravity to Sandusky River.
7	2PD00007010 (41N 21' 21" 83W 06' 58")	<u>Walnut Street Siphon</u> - This CSO is no longer active and has been bricked shut. Previously gravity to Sandusky River.
8	2PD00007011 (41N 20' 29" 83W 06' 36")	<u>Birchard Street (gravity)</u> - Gravity outfall to Sandusky River. Two manually operated sluice gates. Duration by open and close times. Volume by use of model.
9	2PD00007012 (41N 20' 28" 83W 06' 37")	<u>Birchard Street (pumped)</u> – Pumped overflow to Sandusky River. Drexelbrook level control activated. Two 6000 gpm Johnston vertical turbine pumps.
10	2PD00007013 (41N 21' 04" 83W 06' 45")	<u>Bull Run</u> - Gravity outfall to Sandusky River. Two manually operated sluice gates. Duration by open and close times. Volume by use of model.
11	2PD00007015 (41N 21' 14" 83W 06' 37")	<u>Liberty Street (gravity)</u> - Gravity outfall to Sandusky River. Two manually operated sluice gates. Duration by open and close times. Volume by use of model.
12	2PD00007016 (41N 21' 13" 83W 06' 38")	<u>Liberty Street (pumped)</u> - Pumped overflow to Sandusky River. Drexelbrook level control activated. Three 6000 gpm Johnston vertical turbine pumps.
13	2PD00007017 (41N 21' 31" 83W 06' 17")	<u>Sand Road Pond</u> - Gravity outfall to Sandusky River. Manually operated sluice gate. Duration by open and close times. Volume by use of model.
14	2PD00007018 (41N 21' 07" 83W 06' 45")	<u>Fulton Street</u> - Gravity outfall to Sandusky River. Manually operated sluice gate. Gate always open. Will install meter.

10. Describe protocols for making the annual notice available to the public and the Director.

The annual notice will be posted on the City's website as well as emailed to all parties on the contact list as well as the Director. EPA shall be notified with an email to [NPDES CS0@epa.gov](mailto:NPDES_CS0@epa.gov) which will contain a link to the annual notice and information on the person responsible for maintaining the website.

The Annual Report will include the following information:

- The location and receiving water for each CSO discharge point, and (if applicable) any treatment provided.
- The date, location, approximate duration, measured or estimated volume and cause of each wet weather CSO discharge that occurred during the past year.
- The date, location, duration, volume and cause of each dry weather CSO discharge that occurred during the past year.
- A summary of available monitoring data for CSO discharges from the past calendar year.
- A description of any public access areas potentially impacted by each CSO discharge.
- The representative precipitation data in total inches, to the nearest tenth of an inch (0.1") that resulted in a CSO discharge.
- Permittee contact information, if not listed elsewhere on the website where the annual notice is provided.
- A concise summary of the implementation of the nine minimum controls and the status of the implementation of the long term control plan (LTCP) or other plans to reduce or prevent CSO discharge including a description of key milestones remaining to complete the implementation of the plan; and a description of the average annual number of CSO discharges anticipated after implementation of the LTCP.

11. Describe significant modifications to the plan that were made since it was last updated.

This is the first year of the plan and therefore no modifications have been made.